



**MOD CORE**  
Modulation Stomp Pedal

# **Users Manual**

CORE SERIES



[www.nuxefx.com](http://www.nuxefx.com)

Thank you for selecting the **nux** CORE SERIES modeling stomp pedal! With many years of research we're proud to give you great guitar tones for your greatest music experience!

Please take the time to read this manual carefully to get the most out of the unit. We recommend that you keep the manual at hand for future reference.

Mod core is the all-in-one box that include all types of modulation effect that the players have wanted for many years.

Chorus, flanger, phaser, tremolo, rotary, pan, u-vibe and vibrato. Each models can be change from normal to deluxe, so a total of 16 models you can choose.

## FEATURES

- 8 Modulation effects.
- True stereo signal processing.
- Tone Lock function and one preset save/recall.
- New generation 32-bit DSP, high performance 24-bit 44.1kHz AD/DA convert.
- Input/output Sensing circuit select optimized routing automatically.
- True bypass.
- Runs on batteries and AC adaptor.

---

### **Copyright**

*Copyright 2012 Cherub Technology Co. All rights reserved. NUX and MOD CORE are trademarks of Cherub Technology Co. Other product names modeled in this product are trademarks of their respective companies that do not endorse and are not associated or affiliated with Cherub Technology Co.*

### **Accuracy**

*Whilst every effort has been made to ensure the accuracy and content of this manual, Cherub Technology Co. makes no representations or warranties regarding the contents.*

---

## **WARNING!-IMPORTANT SAFETY INSTRUCTIONS BEFORE CONNECTING, READ INSTRUCTIONS**

**WARNING:** To reduce the risk of fire or electric shock, do not expose this appliance to rain or moisture.

**CAUTION:** To reduce the risk of fire or electric shock, do not remove screws. No user-serviceable parts inside. Refer servicing to qualified service personnel.

**CAUTION:** This equipment has been tested and found to comply with the limits for a Class B digital device pursuant to Part 15 of FCC Rules. Operation is subject to the following two conditions: (1) This device may not cause harmful interference, and (2) this device must accept any interference received, including interference that may cause undesired operation.



The lightning symbol within a triangle means "electrical caution!" It indicates the presence of information about operating voltage and potential risks of electrical shock.

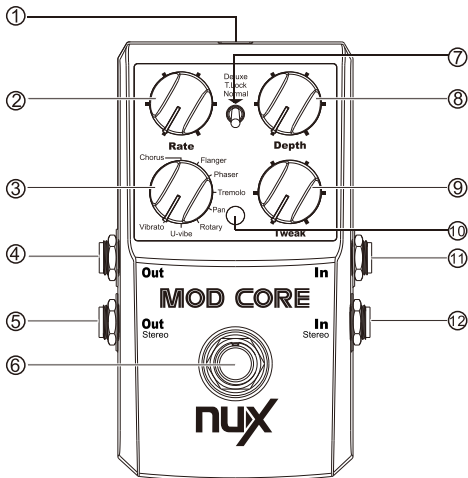


The exclamation point within a triangle means "caution!" Please read the information next to all caution signs.

1. Use only the supplied power supply or power cord. If you are not sure of the type of power available, consult your dealer or local power company.
2. Do not place near heat sources, such as radiators, heat registers, or appliances which produce heat.
3. Guard against objects or liquids entering the enclosure.
4. Do not attempt to service this product yourself, as opening or removing covers may expose you to dangerous voltage points or other risks. Refer all servicing to qualified service personnel.
5. Refer all servicing to qualified service personnel.  
Servicing is required when the apparatus has been damaged in any way, such as when the power supply cord or plug is damaged, liquid has been spilled or objects have fallen into the apparatus, the apparatus has been exposed to rain or moisture, does not operate normally or has been dropped.
6. The power supply cord should be unplugged when the unit is to be unused for long periods of time.
7. Protect the power cord from being walked on or pinched particularly at plugs, convenience receptacles and at the point where they exit from the apparatus.
8. Prolonged listening at high volume levels may cause irreparable hearing loss and/or damage. Always be sure to practice "safe listening".

*Follow all instructions and heed all warnings*  
**KEEP THESE INSTRUCTIONS!**

## PRODUCT INTERFACE



### 1. POWER IN

Mod Core requires 9V DC/300 mA with center negative. Use the power supply with identical specifications.

### 2. Rate Knob

This knob controls the speed of each model.

### 3. TYPE Knob

Turn the TYPE Knob to alternate between 8 modulation models.

Modeling	TWEAK Knob	Description
Chorus	Mix	Adjust the effect level
Flange	Feedback	Adjust the feedback of flange
Phaser	Feedback	Adjust the feedback of Phaser

Tremolo	Width	Adjust the width of stereo tremolo
Rotary	None	
Pan	Width	Adjust the width of stereo
u-vibe	None	
Vibrato	None	

#### **4.OUT Jack**

Connect Mod Core OUT to the guitar amp's input.

#### **5.OUT STEREO Jack**

Connect Mod Core OUT STEREO to the guitar amp's input.

#### **6.ON/OFF Switch**

This footswitch is used to turn effect on/off.

#### **7.TONE LOCK&VARIABLE toggle switch**

Selecting from normal to deluxe, or freeze current setting by switching it to middle position.

#### **8.DEPTH Knob**

This knob controls the depth of each model.

#### **9.TWEAK Knob**

With this knob, adjust the kinds of function depends on the models you selected.

#### **10.Indicator LED**

This LED indicates the status for ON/OFF of effect.

#### **11.INPUT Jack**

Connect your guitar to Mod Core's INPUT jack.

#### **12.INPUT STEREO Jack**

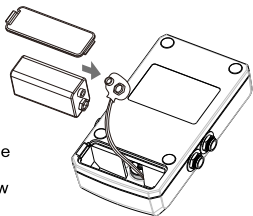
If stereo signal used, connect stereo device to INPUT and INPUT STEREO jack.

## INSTALLING THE BATTERIES

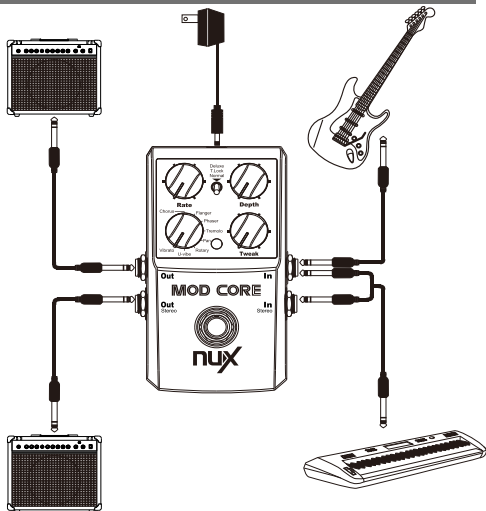
Battery is supplied with the unit. The life of battery may be limited, however, since their primary purpose was to enable testing.

Insert the batteries as shown in figure, being careful to orient the batteries correctly.

1. Remove the old battery from the battery housing, and remove the snap cord connected to it.
2. Connect the snap cord to the new battery, and place the battery inside the battery housing.
3. When the battery run down, the sound of unit gets distort. If this happens, replace with new battery.
4. Battery life can vary depending on battery type.
5. The power comes on when you insert the connector plug into the INPUT jack.
6. The use of an AC adaptor is recommended as the unit's power consumption is relatively high.



## CONNECTIONS



## **Power ON/OFF**

When running the unit on battery power, inserting a plug into the INPUT will automatically switch the unit on.

To prevent malfunction and/or damage to speakers or other devices, always turn down the volume, and turn off the power on all devices before making any connections.

Once the connections have been completed, turn on power to your various device in the order specified. By turning on device in the wrong order, you risk causing malfunction and/or damage to speakers and other devices.

When powering up: Turn on the power to your guitar amp last.

When powering down: Turn off the power to your guitar amp first.

## **HOW TO USE TONE LOCK FUNCTION**

### **1.Lock your setting temporarily**

Switching to mid position, tone lock will lock your setting temporarily. All knobs lose its function.

### **2.Preset Saving/Recall function**

Turn the toggle switch to T.lock after pressing and holding footswitch, you will save your preset. For recall the preset you saved, power off the pedal and then switch toggle switch to T.lock position, power on the pedal again.

### **3.Find you preset parameter**

The current position of knobs maybe different with preset in T.lock position, you can adjust the knobs to make indicator LED flashing to find your preset parameter.

## **CRAZY LITTLE THING CALLED VINTAGE**

8 modulation models Mod Core modeled

### **1.CHORUS**

A chorus adds a short delay to your signal. The delayed signal is modulated in and out of tune and then mixed back with the original signal to create a thicker sound.

### **2.FLANGER**

A flanger uses the same principle as a chorus but uses a shorter delay time and adds regeneration(or repeats) to the modulating delay. This results in an exaggerated up and down sweeping motion to the effect.

### **3.PHASER**

A phaser splits the incoming signal into two paths: one path changes the phase of the original signal, the other is the original signal. The continuously out of phase signal is then mixed back in with the original signal. As the phasing changes, different frequencies get canceled resulting in a sort of swirling sound.

#### **4.TREMOLO**

A Tremolo is basically a change of the signal level controlled by an LFO.

#### **5.PAN**

Sound output alternately from the left and right side.

#### **6.VIBRATO**

The vibrato effect modulates the pitch of the incoming signal. The result is similar to the vibrato technique used by vocalists. In contrast to a chorus or Flanger effect, no direct signal is combined with the pitch-modulated signal.

#### **7.ROTARY**

The rotary speaker emulates a device that includes a spinning horn and woofer. The rotation of these two speakers produces an interesting combination of the sound panning from side to side. This produces a slight pitch change due to the speed of the sound coming towards, and then going away from the listener.

#### **8.UNI VIB**

This resembles a phaser effect, it also provides a unique undulation that you can't get with a regular phaser.

### **SPECIFICATIONS**

- Effect types: 8 modeling modulation models
- Presets: 1 storable user preset
- Sampling Frequency: 44.1 kHz
- A/D converter: 24-bit
- Signal Processing: 32-bit
- Frequency response: 20Hz-20000Hz  $\pm$  1dB
- THD+N: 93dBu (<0.003%) A-Weighting
- Dynamic Range: 100dB
- INPUT: -20dBV@1Mohm
- OUTPUT: -10dBV (Output load impedance of 10k or more)
- Power: 9V DC (9V Battery, ACD-007A Adapter)
- Dimensions: 122(L) x 72(W) x 47(H)mm
- Weight: 270g

### **PRECAUTIONS**

- Environment:
  1. Do NOT use the pedal in high temperature, high humidity, or subzero environments.
  2. Do NOT use the pedal in the direct sunlight.
- Please do NOT disassemble the pedal by yourself.
- Please keep this manual for future reference.

### **ACCESSORIES**

- Owner's manual
- 9V battery



## **THE FCC REGULATION WARNING (for U.S.A.)**

This equipment has been tested and found to comply with the limits for a Class B digital device, pursuant to Part 15 of the FCC Rules. These limits are designed to provide reasonable protection against harmful interference in a residential installation. This equipment generates, uses, and can radiate radio frequency energy and, if not installed and used in accordance with the instructions, may cause harmful interference to radio communications. However, there is no guarantee that interference will not occur in a particular installation. If this equipment does cause harmful interference to radio or television reception, which can be determined by turning the equipment off and on, the user is encouraged to try to correct the interference by one or more of the following measures:

- Reorient or relocate the receiving antenna.
- Increase the separation between the equipment and receiver.
- Connect the equipment into an outlet on a circuit different from that to which the receiver is connected.
- Consult the dealer or an experienced radio/TV technician for help.

## **CE mark for European Harmonized Standards**

CE Mark which is attached to our company's products of Battery mains the product is in fully conformity with the harmonized standard(s) EN 61000-6-3:2007+A1:2011 & EN 61000-6-1:2007 Under the Council Directive 2004/108/EC on Electromagnetic Compatibility.

©2012 Cherub Technology-All rights reserved.  
No part of this publication may be reproduced  
in any form without prior written permission  
of Cherub Technology.

[www.nuxefx.com](http://www.nuxefx.com)



Made in China