



Pro Tools SE[®] User Guide

Version 8.0.3

Legal Notices

This guide is copyrighted ©2010 by Avid Technology, Inc., (hereafter "Avid"), with all rights reserved. Under copyright laws, this guide may not be duplicated in whole or in part without the written consent of Avid.

003, 96 I/O, 96i I/O, 192 Digital I/O, 192 I/O, 888|24 I/O, 882|20 I/O, 1622 I/O, 24-Bit ADAT Bridge I/O, AudioSuite, Avid, Avid DNA, Avid Mojo, Avid Unity, Avid Unity ISIS, Avid Xpress, AVoption, Axiom, Beat Detective, Bomb Factory, Bruno, C|24, Command|8, Controll|24, D-Command, D-Control, D-Fi, D-fx, D-Show, D-Verb, DAE, Digi 002, DigiBase, DigiDelivery, Digidesign, Digidesign Audio Engine, Digidesign Intelligent Noise Reduction, Digidesign TDM Bus, DigiDrive, DigiRack, DigiTest, DigiTranslator, DINR, D-Show, DV Toolkit, EditPack, Eleven, HD Core, HD Process, Hybrid, Impact, Interplay, LoFi, M-Audio, MachineControl, Maxim, Mbox, MediaComposer, MIDI I/O, MIX, MultiShell, Nitris, OMF, OMF Interchange, PRE, ProControl, Pro Tools M-Powered, Pro Tools, Pro Tools|HD, Pro Tools LE, QuickPunch, Recti-Fi, Reel Tape, Reso, Reverb One, ReVibe, RTAS, Sibelius, Smack!, SoundReplacer, Sound Designer II, Strike, Structure, SYNC HD, SYNC I/O, Synchronic, TL Aggro, TL AutoPan, TL Drum Rehab, TL Everyphase, TL Fauxlдер, TL In Tune, TL MasterMeter, TL Metro, TL Space, TL Utilities, Transfuser, Trillium Lane Labs, Vari-Fi Velvet, X-Form, and XMON are trademarks or registered trademarks of Avid Technology, Inc. Xpand! is Registered in the U.S. Patent and Trademark Office. All other trademarks are the property of their respective owners.

Product features, specifications, system requirements, and availability are subject to change without notice.

Guide Part Number 8420-30252-01 REV A 06/10

Documentation Feedback

At Avid, we are always looking for ways to improve our documentation. If you have comments, corrections, or suggestions regarding our documentation, email us at techpubs@avid.com.

contents

Chapter 1. Welcome to Pro Tools SE	1
Pro Tools SE Systems	1
Pro Tools SE Capabilities	1
System Requirements and Compatibility	2
Conventions Used in This Guide	3
About www.avid.com	3
Chapter 2. Installing Pro Tools on Mac	5
Installation Overview	5
Installing Pro Tools SE	5
Installing Device Drivers	6
Connecting the Interface	7
Getting Started with Pro Tools SE	7
MP3 Export Option	9
Uninstalling Pro Tools	10
Chapter 3. Installing Pro Tools on Windows	11
Installation Overview	11
Installing Pro Tools SE	11
Installing Device Drivers	12
Connecting the Interface	13
Getting Started with Pro Tools SE	13
MP3 Export Option	15
Uninstalling Pro Tools	15

Chapter 4. Configuring Your Pro Tools System 17

- Starting Up or Shutting Down Your System 17
- Configuring Pro Tools SE 18
- Optimizing a Mac System for Pro Tools. 20
- Optimizing a Windows System for Pro Tools 22

Appendix A. Hard Drive Configuration and Maintenance. 25

- Formatting an Audio Drive. 25
- Partitioning Drives 27
- Hard Disk Storage Space 28

Appendix B. Resources 29

- About the Pro Tools Guides 29

Index 31

chapter 1

Welcome to Pro Tools SE

Welcome to Pro Tools® SE from Avid®. This guide provides step-by-step instructions to install and configure Pro Tools SE software.

Pro Tools SE Systems

The basic components of a Pro Tools SE system are as follows:

- M-Audio interface qualified for Pro Tools SE.
- Mac or Windows computer qualified for Pro Tools SE.
- Pro Tools SE software.

▲ *For a list of qualified M-Audio interfaces and minimum system requirements, refer to the compatibility information on the Avid website: (www.m-audio.com/ptsefaq).*

Pro Tools SE Capabilities

Pro Tools SE software provides the following capabilities:

- 24-bit audio resolution, at sample rates up to 96 kHz (depending on the M-Audio interface).
- 8 Instrument tracks, 16 Audio tracks, 1 Master Fader.
- Playback of up to 16 tracks of mono or stereo digital audio, and playback of up to 15 tracks while recording 1 track (stereo or mono) or up to 14 tracks while recording 2 mono or stereo tracks.
- Normal and loop recording.
- Processing with up to 3 effects per track.
- Undo or redo up to 10 operations.
- Comprehensive set of effects and software instruments.
- Comprehensive collection of loops in many musical genres.


▲ *Pro Tools uses your computer's CPU to mix and process audio tracks (host processing). Computers with faster clock speeds yield the best performance and more plug-in processing.*

System Requirements and Compatibility

To use Pro Tools SE, you need:

- A qualified M Audio interface, running on a qualified Windows or Mac computer.
- A qualified version of Adobe Flash Player (not included).
- A DVD drive for Installation disc.

Avid can only assure compatibility and provide support for hardware and software it has tested and approved.

 Refer to the compatibility information on the Avid website: (www.m-audio.com/ptsefaq).

Pro Tools Co-installation Information

- Pro Tools SE cannot be co-installed with Pro Tools HD, LE, M-Powered, and M-Powered Essential.
- If you already have Pro Tool M-Powered Essential installed and you want to use Pro Tools SE instead, you must uninstall Pro Tools M-Powered Essential first.


MIDI Requirements


USB MIDI keyboards and interfaces work effectively with Pro Tools systems on Mac or Windows.

Hard Drive Requirements

Pro Tools SE can be used on your system drive. A 5400 RPM drive is the minimum system requirement. If your computer has a slower drive (but otherwise meets all the specifications) you can add a drive or use the application with some reduced track count.

If you are using an ATA/IDE or FireWire hard drive, initialize your drive with the Disk Utility application included with Apple System software (Mac) or the Windows Disk Management (Windows).

 Always back up any important data on your drive before formatting it, as it will erase all data on the drive.

 For more information, see Appendix A, “Hard Drive Configuration and Maintenance.”

Session Compatibility

- Pro Tools SE session files can be opened by Pro Tools HD, LE, and M-Powered.
- Pro Tools HD, LE, M-Powered, and M-Powered Essential session files cannot be opened by Pro Tools SE.
- Pro Tools SE session files cannot be opened by M-Powered Essential.

Conventions Used in This Guide

All of our guides use the following conventions to indicate menu choices and key commands:

Convention	Action
File > Save	Choose Save from the File menu
Control+N	Hold down the Control key and press the N key
Control-click	Hold down the Control key and click the mouse button
Right-click	Click with the right mouse button

The names of Commands, Options, and Settings that appear on-screen are in a different font.

The following symbols are used to highlight important information:



User Tips are helpful hints for getting the most from your system.



Important Notices include information that could affect your data or the performance of your system.



Shortcuts show you useful keyboard or mouse shortcuts.



Cross References point to related sections in this guide and other Pro Tools guides.

About www.avid.com

The Avid website (www.avid.com) is your best online source for information to help you get the most out of your Pro Tools system. The following are just a few of the services and features available.

Product Registration Register your purchase online.

Support and Downloads Contact Avid Customer Success (technical support); download software updates and the latest online manuals; browse the Compatibility documents for system requirements; search the online Knowledge Base or join the worldwide Pro Tools community on the User Conference.

Training and Education Study on your own using courses available online or find out how you can learn in a classroom setting at a certified Pro Tools training center.

Products and Developers Learn about Avid products; download demo software or learn about our Development Partners and their plug-ins, applications, and hardware.


News and Events Get the latest news from Avid or sign up for a Pro Tools demo.

Compatibility Information
www.m-audio.com/ptsefaq.

chapter 2

Installing Pro Tools on Mac

This chapter contains information for Mac systems only. If you are installing Pro Tools on a Windows computer, see Chapter 3, “Installing Pro Tools on Windows.”

 *Before installing this version of Pro Tools, refer to the Read Me information included on the Pro Tools SE Installer disc.*


Installation Overview

Installation of Pro Tools SE on a Mac includes the following steps:

- 1 “Installing Pro Tools SE” on page 5.
- 2 “Installing Device Drivers” on page 6.
- 3 “Connecting the Interface” on page 7.
- 4 “Getting Started with Pro Tools SE” on page 7.
- 5 Configuring your system for improved performance (see Chapter 4, “Configuring Your Pro Tools System”).

Installing Pro Tools SE

Before installing drivers and connecting your M-Audio interface to the computer, you need to install Pro Tools SE software.

 *Do not start this procedure with your M-Audio interface connected to your computer.*

To install Pro Tools SE on Mac OS X:

- 1 Make sure you are logged in as an Administrator for the account where you want to install Pro Tools.



When the installation is complete, you will need to reboot your computer.



For details on Administrator privileges in Mac OS X, see your Apple OS X documentation.

- 2 Insert the Pro Tools SE Installer disc in your DVD drive.

3 Double-click the installer icon when you are prompted.



Pro Tools SE installer icon

4 Click Continue when you are prompted.



5 Follow the on-screen instructions to proceed with installation.

6 Click Continue each time you are prompted.

7 When the “Installation Type” dialog appears, leave the following boxes checked:

Pro Tools SE 8.0.3 Installs all Pro Tools application files (which includes the free plug-in suite and associated content).

SE Audio Loops and Demo Songs Installs additional loops and demo songs.

8 Click Continue.

9 Click Install.

⚠ *Software instrument content is very large and may take up to 30 minutes to install. During this time, the progress bar may not appear to move even though your software is still installing. Do not terminate your installation.*

When the installation is complete, the M-Audio driver dialog appears.

Installing Device Drivers

1 When the following dialog appears, do one of the following:

- Click on the icon for the device that represents the one you are installing and follow the on-screen instructions to install your device drivers.



– or –

- Click the Other SE Device option if there is not an icon that represents the one you are installing. Then follow the on-screen instructions.

2 If prompted, enter your Administrator password and click OK to authenticate the installation.

3 Follow the remaining on-screen instructions.

4 When installation is complete, click Restart.

⚠ *If you clicked the “Other SE Device” option then your device drivers have not yet been installed and you will need to install them now. See the User Guide that came with your M-Audio interface for instructions on driver installation.*

Connecting the Interface

1 After the computer has restarted, connect your interface to your computer.

⚠ *See the User Guide that came with your system for instructions on connecting your interface.*

2 Launch Pro Tools SE by clicking its icon in the Dock.



Pro Tools SE application icon

3 Connect headphones, speakers or an instrument to your interface so you can verify that you have sound once you launch Pro Tools.

💡 *Use the “Demo Songs” option in the Quick Start dialog to verify you have sound. See “Listening to Demo Songs” on page 8.*

Loops and Demo Songs

Pro Tools SE installation includes Loops and Demo Songs.

The loops are pro-quality loops that you can use to quickly sketch out musical ideas. The demo songs let you see and hear many of the things you’ll soon be doing in Pro Tools.

Once these loops and demo songs are installed, they can be found in the following locations:

- Applications/Digidesign/Loops
- Applications/Digidesign/Demo Songs

Getting Started with Pro Tools SE

The first step in beginning a Pro Tools project is creating a session. Pro Tools provides a Quick Start dialog “on launch” that lets you quickly and easily create a session, or listen to demo songs and view tutorials.

To launch Pro Tools

1 Click the Pro Tools SE icon in the Dock (or double-click the application icon in the Pro Tools folder inside the Digidesign folder).

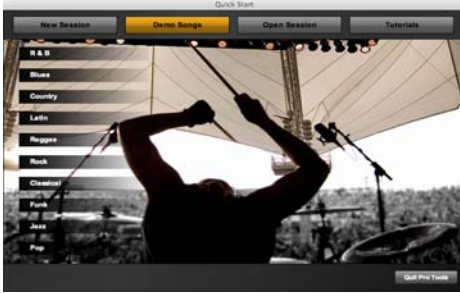
2 Use the Quick Start dialog to do one of the following:

- Create a session from templates.
- Listen to demo songs (lets you verify sound).
- Open any other session on your system.
- Open and view tutorials.

Creating a Session from a Template

To create a new session from a template:


- 1 Select the default New Session button.



- 2 Select any session template from the list.
- 3 Click Choose to open the template.
- 4 In the Save As dialog, name the session, choose where you want to save the session, and click Save.

Listening to Demo Songs

You have to be able to hear your music. Listening to demo songs is an easy way to verify audio. To hear the audio from Pro Tools you will need your headphones or speakers connected to your M-Audio interface.


 Make sure your volume is at a good listening level. See the User Guide that came with your system for instructions.

To listen to a demo song:

- 1 Select the Demo Songs button.



- 2 From the list of music styles, select the category you want (or select an item from a sub-menu).
- 3 Click Audio Preview to listen to the song, then click Choose to open the song in a Pro Tools session.

 The “Audio Preview” button outputs audio from the sound card or audio interface set as default on your operating system.

- 4 Audio Preview

Opening a Recent Session

To open a recent session:

- 1 Select the Open Session button.



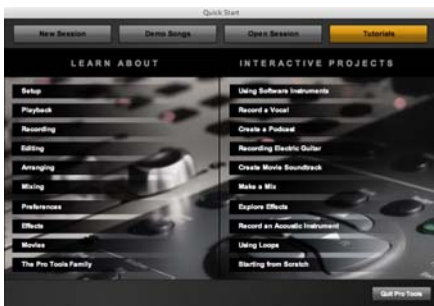
2 From the list of recent session templates, select the one you want. (Or, select Open Other... to select other recent sessions.)

3 Click to open the session.

Viewing Tutorials

To view a tutorial:

1 Select the Tutorials button.



2 From the list of tutorials, click to open the category you want.

MP3 Export Option

The MP3 Export Option lets you create MP3 files from Pro Tools sessions when exporting a region or a Timeline selection as a new audio file.

With the MP3 Export Option, the MP3 file type is available when using File > Export > Audio. Pro Tools uses the Fraunhofer codec for encoding MP3 files.

Authorizing the MP3 Export Option

The MP3 Export Option is a paid option and can be purchased and authorized when you export an audio file as an MP3.

To authorize the MP3 Export Option using an authorization code:

1 Launch Pro Tools.

2 Open a session.

3 Click on a region or make a Timeline selection and choose File > Export > Audio.

4 Select Compressed MP3 as the File Type.

5 Click Export.

6 In the Pro Tools MP3 Option dialog, click Authorize.

7 In the Pro Tools MP3 Export Option dialog, select Manual Activation, then click Next.

8 In the Pro Tools MP3 Export Option dialog, deselect the Use my iLok Smart Key option, then click Next.

9 When prompted, enter your Pro Tools MP3 Export Option serial code (authorization code).


10 Click Next and follow the on-screen instructions to complete the authorization process.

Uninstalling Pro Tools

If you need to uninstall Pro Tools software from your computer, use the Uninstaller application.

To remove Pro Tools from your computer:

1 Make sure you are logged in as an Administrator for the account where Pro Tools is installed.

 *For details on Administrator privileges in Mac OS X, see your Apple OS X documentation.*

2 Go to Applications/Digidesign/Pro Tools/Pro Tools Utilities and double-click Uninstall Pro Tools

3 Click Continue to proceed with the uninstall.

4 Choose the type of uninstall you want to perform:

Safe Uninstall Leaves certain plug-ins and system files needed for compatibility with some Avid products. Use Safe Uninstall if you are using an Avid application or preparing to update to a CS (customer support) release.

Clean Uninstall Removes all Pro Tools files, including system files, Avid plug-ins, and MIDI patch names. Use Clean Uninstall whenever you are preparing to upgrade, or to troubleshoot from a clean system.

5 Click Uninstall.


6 Enter your Administrator password and click OK.

7 Click Finish to close the Installer window.

chapter 3

Installing Pro Tools on Windows

This chapter contains information for Windows systems only. If you are installing Pro Tools on a Mac computer, see Chapter 2, “Installing Pro Tools on Mac.”

 *Before installing this version of Pro Tools, refer to the Read Me information included on the Pro Tools SE Installer disc.*


Installation Overview

Installation of Pro Tools SE on a Windows includes the following steps:

- 1 “Installing Pro Tools SE” on page 11.
- 2 “Installing Device Drivers” on page 12
- 3 “Connecting the Interface” on page 13
- 4 “Getting Started with Pro Tools SE” on page 13
- 5 Configuring your system for improved performance (see Chapter 4, “Configuring Your Pro Tools System”).


Installing Pro Tools SE

Before connecting your M-Audio interface to the computer, you need to install Pro Tools SE software.


 *Do not start this procedure with your M-Audio interface connected to your computer.*

To install Pro Tools SE on Windows:

- 1 Start Windows, logging in with Administrator privileges. For details on Administrator privileges, refer to your Windows documentation.

 *When the installation is complete, you will need to reboot your computer.*

- 2 Insert the Pro Tools SE Installer disc in your DVD drive.

 *In Windows 7, if the User Account Control dialog appears, click “Allow.”*

3 Click Continue when you are prompted.



⚠ In Windows 7 and Windows XP, a series of Windows Security dialogs may appear. If you see “Install” or “Continue Anyway,” click on each one until they go away.

4 Follow the on-screen instructions to proceed with installation and click Next when prompted.

5 To install the complete compliment of Pro Tools software and plug-ins, leave Pro Tools selected.

6 When the “Select Features” dialog appears, leave the following boxes checked:

Pro Tools SE 8.0.3 Installs all Pro Tools application files (which includes the free plug-in suite and associated content).

SE Audio Loops and Demo Songs Installs additional loops and demo songs.

7 Click Next.

8 Click Install.

9 Wait for the installer to finish installing all components before proceeding to the next step.

10 When installation is complete, click Finish.

⚠ Software instrument Content is very large and may take up to 30 minutes to install. During this time, the progress bar may not appear to move even though software is still installing. Do not terminate your installation.

11 When the installation is complete, the M-Audio driver dialog appears.

Installing Device Drivers

1 When the following dialog appears, do one of the following:

- Click on the icon for the device that represents the one you are installing and follow the on-screen instructions to install your device drivers.



– or –

- Click the Other SE Device option if there is not an icon that represents the one you are installing. Then follow the on-screen instructions.

2 Follow the remaining on-screen instructions.

3 When installation is complete, click Restart.

⚠ *If you clicked the “Other SE Device” option then your device drivers have not yet been installed and you will need to install them now. See the User Guide that came with your M-Audio interface for instructions on driver installation.*

Connecting the Interface

1 After the computer has started, connect your interface to your computer.

⚠ *See the User Guide that came with your system for instructions on connecting your interface.*

⚠ *In Windows 7 and Windows XP, a series of Software Installation dialogs about the driver not passing Windows Logo testing may appear. Click “Continue Anyway” on each one until they go away.*

If any other dialogs appear (such as the “Found New Hardware” dialog), leave them open and do not click on them. These dialogs will close on their own.

2 Launch Pro Tools SE by double-clicking its icon on your desktop.



Pro Tools SE application icon

3 Connect headphones, speakers or an instrument to your interface so you can verify that you have sound once you launch Pro Tools.

💡 *Use the “Demo Songs” option in the Quick Start dialog to verify you have sound. See “Listening to Demo Songs” on page 14.*

Loops and Demo Songs

Pro Tools SE installation includes an option to install Loops and Demo Songs.

The loops are pro-quality audio loops that you can use to quickly sketch out musical ideas. The demo songs let you see and hear many of the things you’ll soon be doing in Pro Tools.

Once these loops and demo songs are installed, they can be found in the following locations:

- Programs Files\Digidesign\Pro Tools\Loops
- Programs\Digidesign\Pro Tools\Demo Songs

Getting Started with Pro Tools SE

The first step in beginning a Pro Tools project is creating a session. Pro Tools provides a Quick Start dialog “on launch” that lets you quickly and easily create a session, or listen to demo songs and view tutorials.

To launch Pro Tools

1 Double-click the Pro Tools SE shortcut on your desktop (or the application icon in the Pro Tools folder inside the Digidesign folder).

2 Use the Quick Start dialog to do one of the following:

- Create a session from templates.

- Listen to demo songs (lets you verify sound).
- Open any other session on your system.
- Open and view tutorials.

Creating a Session from a Template

To create a new session from a template:


- 1 Select the default New Session button.



- 2 Select any session template from the list.
- 3 Click Choose to open the template.
- 4 In the Save As dialog, name the session, choose where you want to save the session, and click Save.

Listening to Demo Songs

You have to be able to hear your music. Listening to demo songs is an easy way to verify audio. To hear the audio from Pro Tools you will need your headphones or speakers connected to your M-Audio interface.


 Make sure your volume is at a good listening level. See the User Guide that came with your system for instructions.

To listen to a demo song:

- 1 Select the Demo Songs button.



- 2 From the list of music styles, select the category you want (or select an item from a submenu).
- 3 Click Audio Preview to listen to the song, then click Choose to open the song in a Pro Tools session.

 The “Audio Preview” button outputs audio from the sound card or audio interface set as default on your operating system.

Opening a Recent Session

To open a recent session:

- 1 Select the Open Session button.



- 2 From the list of recent session templates, select the one you want.

- 3 Click to open the session.

Viewing Tutorials

To view a tutorial:

- 1 Select the Tutorials button.



- 2 From the list of tutorials, click to open the category you want.

MP3 Export Option

The MP3 Export Option lets you create MP3 files from Pro Tools sessions when exporting a region or a Timeline selection as a new audio file.

With the MP3 Export Option, the MP3 file type is available when using File > Export > Audio. Pro Tools uses the Fraunhofer codec for encoding MP3 files.

Authorizing the MP3 Export Option

The MP3 Export Option is a paid option and can be purchased and authorized when you export an audio file as an MP3.

To authorize the MP3 Export Option using an authorization code:

- 1 Launch Pro Tools.

- 2 Open a session.

- 3 Click on a region or make a Timeline selection and choose File > Export > Audio.

- 4 Select Compressed MP3 as the File Type.

- 5 Click Export.

- 6 In the Pro Tools MP3 Option dialog, click Authorize.

- 7 In the Pro Tools MP3 Export Option dialog, select Manual Activation, then click Next.

- 8 In the Pro Tools MP3 Export Option dialog, deselect the Use my iLok Smart Key option, then click Next.

- 9 When prompted, enter your Pro Tools MP3 Export Option serial code (authorization code).

Click Next and follow the on-screen instructions to complete the authorization process.

Uninstalling Pro Tools

Use the Uninstall Pro Tools application to uninstall Pro Tools software from your computer.

To uninstall Pro Tools from your computer:

- 1 Start Windows, logging in with Administrator privileges. For details on Administrator privileges, refer to your Windows documentation.

- 2 Go to C:\Program Files\Digidesign\Pro Tools\Pro Tools Utilities and double-click Uninstall Pro Tools.exe.

- 3 Click Next.

- 4 Click Uninstall to proceed with the uninstallation.

chapter 4

Configuring Your Pro Tools System

After you have connected your system and installed Pro Tools software, you are ready to start up and configure your Pro Tools system.

Starting Up or Shutting Down Your System

To ensure that the components of your Pro Tools system communicate properly with each other, you need to start them in a particular order.

Start up your Pro Tools system in this order:

- 1 Make sure all your equipment (including your computer) is off.
- 2 Lower the volume of all output devices in your system (especially the main outputs to your speakers!).
- 3 Turn on any external hard drives. Wait approximately ten seconds for them to spin up to speed.
- 4 Turn on any control surfaces.
- 5 Turn on any MIDI interfaces, MIDI devices, or synchronization peripherals.

- 6 With the volume of all output devices lowered, turn on your Pro Tools SE audio interfaces. (Only for interfaces that use hardware requiring external power). Wait at least fifteen seconds for the audio interface to initialize and the status LEDs to stop flashing

- 7 Turn on your computer.

- 8 Launch Pro Tools or any third-party audio or MIDI applications.

- 9 Bring the output levels up to a comfortable listening level.

Shut down your Pro Tools system in this order:

- 1 Quit Pro Tools and any other running applications.



To quit Pro Tools, choose Pro Tools > Quit (Mac) or File > Exit (Windows).

- 2 Turn off or lower the volume of all output devices in your system.

- 3 Turn off your computer.

- 4 For Pro Tools SE systems that use hardware requiring external power, turn off the hardware.

- 5 Turn off any MIDI interfaces, MIDI devices, or synchronization peripherals.

- 6 Turn off any control surfaces.

- 7 Turn off any external hard drives.

Configuring Pro Tools SE

Pro Tools System Settings

Pro Tools SE provides preference settings that let you quickly adjust the performance of your system by changing *system settings* that affect its capacity for processing, playback, and recording.

To change Pro Tools preferences:

- 1 Launch Pro Tools.
- 2 Choose Pro Tools SE > Preferences (Mac) or File > Preferences (Windows).
- 3 Click the tab (Audio, Control Surfaces, or Session) for the page that has the preferences you want to change.
- 4 Change preferences.
- 5 Click OK to save your changes and close the Preferences dialog.

Audio Tab

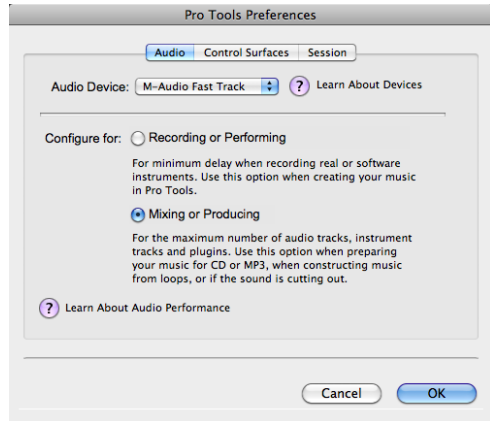
Using this tab, you can quickly choose and set up your computer for “Recording or Performing” or “Mixing or Producing” tasks. You can also verify your audio device.

If you have an audio device with more than two outputs, Pro Tools SE automatically uses the first two.

Audio Device Displays the audio device connected to your system.

Recording or Performing Sets the minimum delay when recording real or software instruments. Use this option when you create music by playing into Pro Tools.

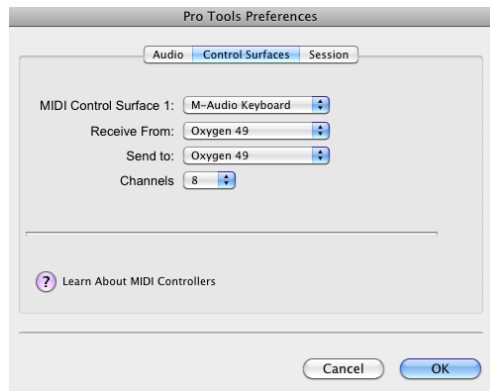
Mixing or Producing Sets the maximum number of audio tracks, instrument tracks and plug-ins. Use this option when preparing music for CD or MP3, constructing music from loops, or if the sound is cutting out.



Pro Tools Preferences dialog (Audio tab shown)

Control Surfaces Tab

This tab lets you configure one MIDI control surface keyboard for Pro Tools SE.



Control Surfaces tab (Oxygen Direct Link shown)

MIDI Control Surface 1 Lets you select the MIDI control surface connected to your computer and defaults to the selected choice. When selected, all ports of the control surface are enabled and all ports on any other control surfaces are disabled.

Receive From Lets you select the MIDI In port to which your MIDI control surface is connected.

Send To Lets you select the MIDI Out port to which your MIDI control surface is connected.

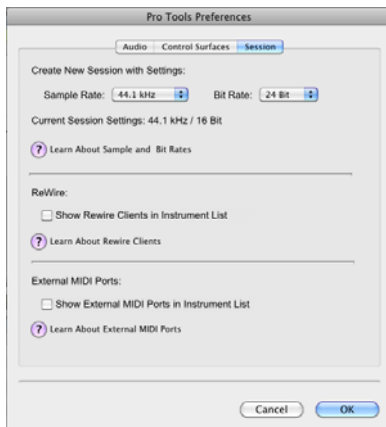
Channels Displays the number of control channels supported by the selected MIDI control surface type.

Session Tab

This tab lets you easily create a new Pro Tools session with your usual settings.

It also lets you “hide” or “show” Pro Tools compatible ReWire client applications and external MIDI ports within Pro Tools.

Compatible ReWire client applications and external MIDI devices are automatically detected by Pro Tools and are available in the Instrument list on Instrument tracks.



Session tab

To create a new session with your preferred settings:

- 1 Click Session.
- 2 Select the Bit Depth (16 bit or 24 bit) and the Sample Rate (44.1 kHz, 48 kHz, 88.2 kHz or 96 kHz).
- 3 Check Show Rewire Clients in Instrument List if you want a ReWire application to be available in an Instrument list.
- 4 Check External MIDI Ports if you want an external MIDI device to be available in an Instrument list.
- 5 Click OK to save your changes and close the Preferences dialog.

Selecting Bit Depth and Sample Rate


When selecting a bit depth or sample rate for your session, consider fidelity, any compatibility issues with others systems, and storage space.

Bit depth and sample rate also have an effect on the amount of mixing power available in a session. Fewer mixer channels are available with 24-bit sessions and with sessions at higher sample rates.

It is not possible to combine different bit depths within a single Pro Tools session: files of different bit depths must be converted and imported into the session.

Optimizing a Mac System for Pro Tools

To ensure optimum performance with Pro Tools, configure your computer before using Pro Tools hardware and software.

 For Windows System Optimization, see “Optimizing a Windows System for Pro Tools” on page 22.

Before configuring your computer, make sure you are logged in as an Administrator for the account where you want to install Pro Tools. For details on Administrator privileges in Mac OS X, see your Apple OS X documentation.

Turning Off Software Update

Do not use the Mac OS X automatic Software Update feature, as it may upgrade your system to a version of Mac OS that has not been qualified for Pro Tools. For details on qualified versions of Mac OS, visit www.avid.com/compatibility.

To turn off the Software Update feature:

- 1 Choose System Preferences from the Apple menu and click Software Update.
- 2 Click the Scheduled Check tab.
- 3 Deselect “Check for Updates.”

Turning Off Energy Saver


To turn off the Energy Saver feature:

- 1 Choose System Preferences from the Apple menu and click Energy Saver.
- 2 Do the following:
 - Set the computer sleep setting to Never.
 - Set the display sleep setting to Never.
 - Deselect “Put the hard disk(s) to sleep when possible.”

Disable or Reassign Mac Keyboard Shortcuts Used by Pro Tools

To have the full complement of Pro Tools keyboard shortcuts, you need to disable or reassign any conflicting Mac OS X Keyboard Shortcuts in the Apple System Preferences, including the following:

- “Show Help menu”
- Under “Keyboard Navigation”
 - “Move focus to the window drawer”
- Under “Dock, Exposé, and Dashboard”
 - “Automatically hide and show the Dock”
 - “All windows”
 - “Application windows”
 - “Desktop”
 - “Dashboard”
 - “Spaces”
- Under “Spotlight”
 - “Show Spotlight search field”
 - “Show Spotlight window”

 For a complete list of Pro Tools keyboard shortcuts, see the Keyboard Shortcuts Guide (*Help > Keyboard Shortcuts*).

To disable or reassign Mac OS X keyboard shortcuts:

- 1 Choose System Preferences from the Apple menu and click Keyboard.
- 2 Click the Keyboard Shortcuts tab.
- 3 Do one of the following:
 - Deselect the Mac OS X options that conflict with Pro Tools keyboard shortcuts.

– or –

 - Assign different, non-conflicting keyboard shortcuts to the corresponding Mac OS X options.

Reassign Spaces Keyboard Shortcuts

If you want to use Spaces, you should reassign the Spaces keyboard shortcuts to avoid conflicts with important Pro Tools keyboard shortcuts. You can reassign Spaces keyboard shortcuts to use a combination of modifier keys (Command+Option+Control+Shift) in addition to the default Spaces keyboard shortcut assignments to avoid these conflicts.


To reassign Spaces keyboard shortcuts to use modifier key combinations that do not conflict with Pro Tools keyboard shortcuts:

- 1 Choose System Preferences from the Apple menu and click Exposé & Spaces.
- 2 Click the Spaces tab.
- 3 Ensure that Enable Spaces is selected.
- 4 Press and hold Command+Option+Control+Shift and select “Control+Option+Shift+Command+F8” from the “To activate Spaces” pop-up menu.
- 5 Press and hold Command+Option+Control+Shift and select “Control+Option+Shift+Command+Arrow Keys” from the “To switch between spaces” pop-up menu.
- 6 Press and hold Command+Option+Control+Shift and select “Control+Option+Shift+Command+Number Keys” from the “To switch directly to a space” pop-up menu.

Disabling Spotlight Indexing

The Mac OS X Spotlight feature automatically indexes files and folders on local hard drives in the background. In most cases, this is not a concern for normal Pro Tools operation. However, if Spotlight starts indexing drives while recording in a Pro Tools session with high track counts for an extended period of time, it can adversely

affect Pro Tools system performance. You may want to disable Spotlight indexing for all local drives before using Pro Tools for big recording projects.

 *Disabling Spotlight indexing also disables the Find function in Mac OS.*

To disable Spotlight indexing:

- 1 Choose System Preferences from the Apple menu and click Spotlight.
- 2 In the Spotlight window, click the Privacy tab.
- 3 To prevent indexing of a drive, drag its icon from the desktop into the list.

Enabling Journaling for Audio Drives


To yield higher performance from audio drives, enable journaling.

To enable journaling:

- 1 Launch the Disk Utility application, located in Macintosh HD/Applications/Utilities.
- 2 Select the volume in the left column of the Disk Utility window.
- 3 Select Enable Journaling in the toolbar.

Optimizing a Windows System for Pro Tools


To ensure optimum performance with Pro Tools SE, configure your computer before using Pro Tools SE hardware and software.

 For Mac System Optimization, see “Optimizing a Mac System for Pro Tools” on page 20.

Before configuring your computer, make sure you are logged in as an Administrator for the account where you want to install Pro Tools. For details on Administrator privileges, see your Windows documentation.

Recommended Optimizations

To ensure optimum performance with Pro Tools, configure the following settings before using Pro Tools hardware and software.

 When you are finished changing Windows system settings, restart your computer.

Enabling DMA

Enabling your computer's DMA (Direct Memory Access) frees up CPU bandwidth so your computer can do other Pro Tools tasks.

In most cases the DMA option will already be set correctly, as Windows detects and activates DMA mode by default.

To enable DMA for any IDE hard drives (Windows 7, Windows XP):

- 1 Choose Start.
- 2 Right-click Computer (Windows 7) or My Computer (Windows XP) and choose Manage.
- 3 In the left pane of Computer Management under System Tools, click on Device Manager.
- 4 In the right pane, click the triangle (Windows 7) or the plus (+) sign (Windows XP) next to IDE ATA/ATAPI Controllers.
- 5 Double-click on an IDE Channel.
- 6 Click the Advanced Settings tab.
- 7 Under Device Properties, check the Enable DMA box (Windows 7), or under each listed Device, set the Transfer Mode to DMA if available (Windows XP).
- 8 Click OK.
- 9 Repeat for each IDE Channel.

Configuring Windows Power Management Settings

Pro Tools requires maximum CPU performance for optimal RTAS processing and disk streaming. For best performance, use the following recommended Windows Power Management settings.

To configure Windows Power Management Settings (Windows 7):

- 1 Choose Start > Control Panel.
- 2 Click Hardware and Sound > Power Options.
- 3 In the Power Options control panel, click High Performance.
- 4 Click Change plan settings.
- 5 Click Change advanced power settings to change additional settings.
- 6 Click Hard disk > Turn off hard disk after = Never. You can make optional changes such as disabling sleep and disabling shutting down the monitor.
- 7 Click OK or click Save changes to save the changes.
- 8 Close the window.

To configure Windows Power Management Settings (Windows XP):

- 1 Choose Start > Control Panel.
- 2 Double-click Power Options.
- 3 Click the Power Schemes tab.
- 4 From the Power Schemes pop-up menu, select Always On.
- 5 Verify that the following settings are set to Never:
 - Turn off hard disks
 - System standby
 - System hibernates
- 6 Click OK.

Disabling User Account Control (Windows 7)

Some third-party applications that interface with Pro Tools may require UAC to be disabled for proper operation.

To disable User Account Control (UAC):

- 1 Choose Start > Control Panel.
- 2 Click User Accounts and Family Safety.
- 3 In the User Accounts and Family Safety control panel, click User Accounts.
- 4 Click Change User Account Control settings (Windows 7).
- 5 Move the User Account Control slider to Never Notify (Windows 7).
- 6 Click OK.
- 7 Restart your computer.

Additional Optimizations

Pro Tools can also be affected by other software and hardware drivers installed on your computer. For best possible performance, it is recommended (but not required) that you do the following:

- Avoid running any unneeded programs at the same time as Pro Tools.
- Turn off any software utilities that run in the background, such as Windows Messenger, calendars, and disk maintenance programs.
- Turn off any non-essential USB devices while running Pro Tools.
- If your video display card supports it, enable Bus Mastering in the manufacturer's Control Panel. See the manufacturer's instructions for details.

appendix a

Hard Drive Configuration and Maintenance

Pro Tools SE software can be installed and used on your system drive.

Session files and *audio* can then be created and recorded to your system drive. Session files are the documents you create for each song or project. Audio files refer to the files you record or import into each session.

A 5400 RPM drive is the minimum system requirement. If you are using an older computer, if your computer has a slower drive (but otherwise meets all the specifications), we recommend either using the application with some reduced track count or using an external or secondary internal audio drive to store your Pro Tools SE sessions and audio.

For example, if you plan to record and play back many tracks simultaneously, we recommend using a second hard drive dedicated to saving and recording your session and audio files.

When creating new session files, save them to this second hard drive and then all audio files will also record and save to this hard drive.

Formatting an Audio Drive

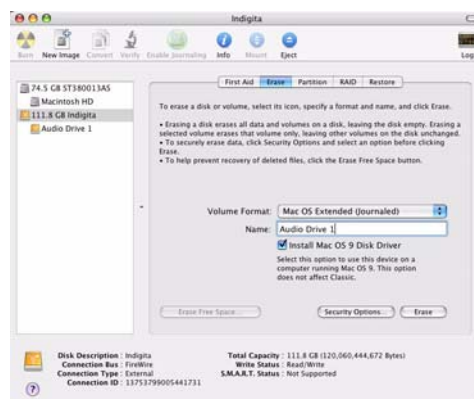
⚠ *Always back up any important data on your drive before formatting it, as formatting will erase all data on the drive.*

Formatting Mac Audio Drives

For optimum performance, audio drives should be formatted as Mac OS Extended (Journaled).

To format an audio drive:

- 1 Launch the Disk Utility application, located in Macintosh HD/Applications/Utilities.
- 2 Click the Erase tab.



Disk Utility (Mac OS X)

- 3 Select the drive you want to initialize in the column on the left side of the window.

4 Choose the Mac OS Extended (Journaled) format.

⚠ Do not choose the “Case-Sensitive” format option. Pro Tools will not operate properly with case-sensitive formatted drives.

5 Type a name for the new volume.

6 If you plan to connect the drive to a Mac OS 9 computer, select Install Mac OS 9 Drivers (Mac OS 9 options only appear in 10.5 or below).

7 Click Erase.

The drive appears on the Desktop with the new volume name.

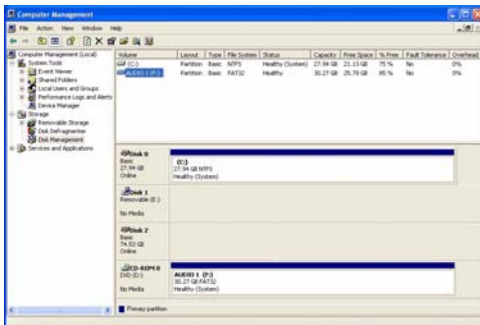
Formatting Windows Audio Drives

For optimal performance, audio drives should be formatted as NTFS.

⚠ Pro Tools only supports Basic drive types. Do not convert the drive to a Dynamic type.

To format an audio drive (Windows 7 and Windows XP):

- 1 Right-click Computer (Windows 7) or My Computer (Windows XP) and choose Manage.
- 2 Under Storage, choose Disk Management.



Disk Management window (Windows XP)

3 If the volume is “Healthy,” do the following:

💡 Healthy volumes are volumes that have previously been partitioned and formatted.

- In the Disk Management window, right-click the hard drive you will use for audio and choose Format.
- In the Format window, name the volume.
- Choose a file system. For optimum performance, audio drives should be formatted as NTFS.
- Select Perform a quick format.
- Make sure Enable file and folder compression is not selected.
- Set the Allocation unit size to Default.
- Click OK.

4 If the volume is “Unallocated,” do the following:

- In the Disk Management window, Right-click the hard drive you will use for audio and choose New Partition.
- In the New Partition Wizard window, click Next.
- When prompted, select the partition type.

💡 Avid recommends using Primary partitions, instead of Extended partitions.

- Follow the on-screen instructions to select a partition size and other partition settings.
- When prompted, choose a file system. For optimum performance, audio drives should be formatted as NTFS.
- Select Perform a quick format.
- Make sure Enable file and folder compression is not selected.
- Set the Allocation unit size to Default.
- Click OK.

Partitioning Drives

Partitioning creates a logical volume or volumes on a physical drive, almost as if you were creating virtual hard drives. Partitions can then be formatted with the appropriate file system (NTFS for Windows, HFS+ for Mac).

⚠ *Mac OS allows drives larger than 4096 MB to be seen as whole volumes. Drives must be initialized with a disk utility that recognizes the 2 terabyte limit. Single Pro Tools audio files cannot exceed 3.4 GB in size.*

⚠ *Windows XP allows drives formatted with the NTFS file system to be seen as whole volumes. Single Pro Tools audio files cannot exceed 3.4 GB in size.*

Seek Times on Partitioned Drives

Seek times are actually faster on partitioned drives (assuming that reads and writes are performed on a single partition), since the heads only have to seek within the partition boundaries, rather than the whole capacity of the drive.

Smaller partitions perform faster than larger partitions, but this comes at the expense of contiguous storage space. When you partition a drive, you will need to find the compromise that best suits your performance and storage requirements.

⚠ *Avoid distributing audio files within a session over different partitions on the same drive since this will adversely affect drive performance.*

Hard Disk Storage Space

Mono audio tracks recorded with 16-bit resolution at 44.1 kHz (CD quality) require approximately 5 MB of hard disk space per minute. The same tracks recorded with 24-bit resolution require about 7.5 MB per minute.

Stereo audio tracks recorded with 16-bit resolution at 44.1 kHz (CD quality) require approximately 10 MB of hard disk space per minute. The same tracks recorded with 24-bit resolution require about 15 MB per minute.

Table 2 lists the required disk space for certain track numbers and track lengths, to help you estimate your hard disk usage.

Table 2. Required hard drive space for audio tracks (44.1 kHz and 48 kHz sessions shown)

Number of Tracks and Length	16-bit at 44.1 kHz	16-bit at 48 kHz	24-bit at 44.1 kHz	24-bit at 48 kHz
1 mono track, 1 minute	5 MB	5.5 MB	7.5 MB	8.2 MB
1 stereo track (or two mono tracks), 5 minutes	50 MB	55 MB	75 MB	83 MB
1 stereo track (or two mono tracks), 60 minutes	600 MB	662 MB	900 MB	991 MB
24 mono tracks, 5 minutes	600 MB	662 MB	900 MB	991 MB
24 mono tracks, 60 minutes	7 GB	7.8 GB	10.5 GB	11.6 GB
32 mono tracks, 5 minutes	800 MB	883 MB	1.2 GB	1.3 GB
32 mono tracks, 60 minutes	9.4 GB	10.4 GB	14 GB	15.4 GB


appendix b

Resources

Whether you are new to Pro Tools or just starting out with your new system, we encourage you to read and utilize the many guides that Pro Tools provides. There are also useful online resources available, giving you everything from Pro Tools tips to Pro Tools answers.

About the Pro Tools Guides

In addition to any printed guides included with your system, PDF versions of the printed guides and many additional Pro Tools guides are installed automatically during Pro Tools installation (see “Documentation Installed Automatically with Pro Tools SE” on page 30).

 You can download the guide for whatever interface you have. Go to:
<http://www.m-audio.com/manuals>

User Guide

The *User Guide* for your system gives you detailed instructions for setting up and configuring software and hardware for optimum performance.

Printed Quick Setup Instructions

The printed *Quick Setup instructions* give you easy-to-follow steps for setting up your software and hardware.

Guides Accessible in Pro Tools

The main Pro Tools guides are accessible from the Pro Tools Help menu. (Choose Help, then select a guide.)

These include:


- *Pro Tools SE User Guide*
- *Pro Tools SE Shortcuts Guide*
- *Hardware Guides*
 - *KeyStudio User Guide*
 - *Recording Studio User Guide*
 - *Vocal Studio User Guide*
- *Interactive Projects Guide*

Documentation Installed Automatically with Pro Tools SE

When you install Pro Tools SE, you can access the PDF versions of the same Pro Tools guides found in the Help Menu. This documentation can be found in the following locations:

Mac Applications/Digidesign/Documentation

Windows C:\Program Files\Digidesign\
Documentation

 *To view or print PDF guides, you can use Adobe Reader (recommended) or Apple Preview (Mac only).*

Helpful Online Resources

Once you get going, here are some helpful online resources:

- For questions about installation, visit Avid's online Knowledge Base. Go to:
<http://www.m-audio.com/ptsefaq>
- Get useful information, help, and tips from the worldwide community of Pro Tools users at the online User Conference. Go to:
<http://duc.avid.com>
- If you can't find your answer on the User Conference or the Knowledge Base, contact Avid email support. Go to:
<http://www.avid.com/support>

index

A

Avid
customer success 3

C

Clean Uninstall (Mac) 10

D

DMA option (Windows), enabling 22
drive formatting
Mac 25
Windows 26

E

Energy Saver (Mac), turning off 20

H

hard drives
formatting 25, 26, 25
partitioning 27
space requirements 28

I

installing Pro Tools SE
Mac 5
Windows 11

J

journaling (Mac), enabling 21

P

partitioning hard drives 27
Pro Tools
capabilities 1
removing (Mac) 10, 15

R

removing Pro Tools
Mac 10
Windows 15

S

Safe Uninstall (Mac) 6, 10
Software Update (Mac), turning off 20
Spotlight indexing (Mac), disabling 21
system
recommended optimizations (Windows) 23, 22
shutting down 17
system optimization
Mac 20
Windows 22

T

technical support 3

U

uninstalling Pro Tools
Mac 10
Windows 15
User Account Control (UAC)
disabling 23



Avid
2001 Junipero Serra Boulevard
Daly City, CA 94014-3886 USA

Technical Support (USA)
Visit the Online Support Center at
www.avid.com/support

Product Information
For company and product information,
visit us on the web at www.avid.com