

M-AUDIO



English

Quick Start Guide

M-AUDIO

1. About X-Session Pro

Thank you for purchasing M-Audio's X-Session Pro. This control surface has been designed to look and feel like a regular DJ mixer while giving you complete hands-on control of your DJ and music production software. While X-Session Pro may look like a typical DJ mixer, its knobs, faders, and buttons transmit MIDI data allowing you to use the controller with much more than just DJ applications—you can use this device to control everything from virtual instruments to your entire DAW setup.

This Quick Start Guide will walk you through the installation process for X-Session Pro and help you learn the basics of using the controller. For more detailed information, please refer to the User Guide found on the M-Audio MIDI Controller CD-ROM.

2. X-Session Pro Installation

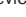
X-Session Pro is class-compliant and requires no drivers when used under Windows XP or Mac OS X. This means you can simply connect X-Session Pro to your computer using the supplied USB cable and begin using the controller—no drivers or additional installation is required.

3. Advanced Installation for Windows XP Users

NOTE: You are NOT required to install these drivers if you plan to use X-Session Pro with one program at a time.

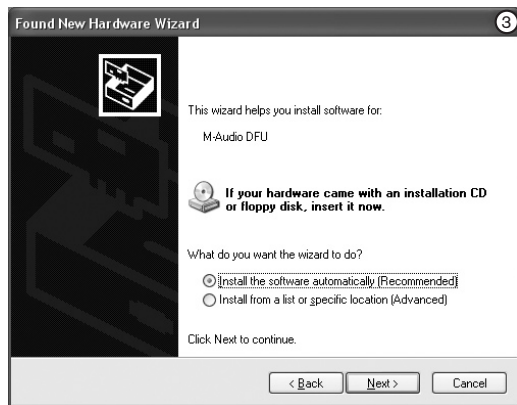
Advanced Windows XP users who plan to use X-Session Pro with more than one audio application at the same time must install special multi-client drivers. This can be done by following the instructions below:

1. If you have already connected X-Session Pro to your computer, disconnect it before beginning the installation.

2. We recommend that you download the most recent X-Session Pro drivers by going to the Support > Drivers page at www.m-audio.com. This ensures that you have the newest drivers available. If you do not have Internet access, insert the M-Audio MIDI Controller CD-ROM into your computer to install the drivers that came with X-Session Pro.
 - a. If you are installing drivers from the M-Audio MIDI Controller CD-ROM, the computer will automatically display the interactive install screen  when the CD-ROM is inserted. If your computer fails to launch this application, you can manually start it by clicking on Start > My Computer > M-Audio MIDI Controller CD-ROM. Next, select your product from the menu and click "Install."
 - b. If you are installing drivers from www.m-audio.com, simply double-click the file once it has finished downloading.



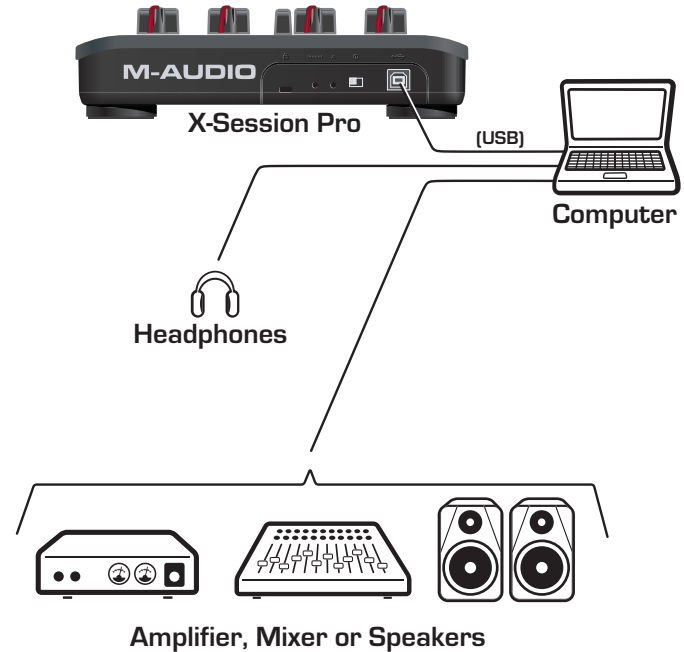
3. Follow the driver installer's on-screen instructions.
4. At various points in this installation process, you may be notified that the driver being installed has not passed Windows Logo Testing. Click "Continue Anyway" to proceed with the installation.
5. Once the installer has completed, click "Finish."
6. Attach X-Session Pro to an available USB port.
7. Windows will identify the controller and will ask if you want to search the Internet for a driver. Select "No, not this time" and press "Next" Ⓞ.
8. Windows will display a "Found New Hardware" Wizard Ⓞ.
9. Choose "Install software automatically" and click "Next."
10. Once the Wizard has completed, click "Finish."
11. Once the installation is complete, you will see a message pop up stating, "Your new hardware is installed and ready to use."



4. Connection Diagram

- Attach X-Session Pro to an available USB port on your computer.
- Attach your amplifier, mixer, or powered speakers to your computer's audio outputs.
- If your computer (or audio interface) contains a separate headphone output, connect your headphones to this output.

Your setup may vary from the illustration if you own a professional audio interface such as an M-Audio Fast Track USB or FireWire 410. If you own such an interface, be sure to connect your amplifier, mixer, or powered speakers to the interface instead of your computer. Professional audio interfaces will provide improved sound quality, lower latency, and better features than your computer's built-in audio ports.



5. Using X-Session Pro

Each knob, button, and fader on X-Session Pro is assigned with its own unique MIDI Continuous Controller (CC) number. Each time you turn a knob, push a button, or move a fader, X-Session Pro sends out MIDI CC data that is received and interpreted by your music software. To control your music software with X-Session Pro, make sure the program is configured to receive MIDI data generated by X-Session Pro. Configuration varies from software to software, but it is usually done through the program's control panel. Refer to your program's user guide to learn how to do this.

Next, use your program's "MIDI Learn" function to assign each of X-Session Pro's knobs, buttons, and faders to the specific parameters you'd like to control. Most audio applications now have a MIDI Learn function, and you'll need to refer to the software's documentation to find out how to use this feature. Once you have assigned an on-screen parameter to one of the buttons, knobs, or sliders on X-Session Pro, you should be able to control the parameter using the hardware controller.

If your program does not feature a "MIDI Learn" function, you may still be able to manually assign your programs features to be controlled by X-Session Pro. To find out how to do this, refer to the X-Session Pro User Guide found on the M-Audio MIDI Controller CD-ROM.

6. Additional Information and Support

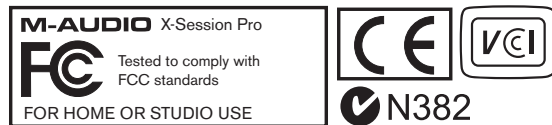
Help on the Web:

The M-Audio website (www.m-audio.com) contains the latest X-Session Pro drivers as well as useful links to news stories, FAQs, and technical support. We recommend checking this site regularly to ensure you have the latest drivers and most up-to-date information about your M-Audio products.

Upgrading your hardware:

Most built-in audio devices suffer from high audio latency, do not have multiple audio outputs, and cannot make use of a DJ application's cue monitoring system. If you have been using X-Session Pro with your computer's built-in audio outputs but would like additional features such as multiple outputs for cue monitoring and low-latency ASIO drivers, consider purchasing an M-Audio digital audio interface. M-Audio builds a full line of high-performance interfaces including Fast Track USB, Fast Track Pro, MobilePre USB, and FireWire Solo. All of these products give you expanded functionality and are 100% compatible with your DJ and professional audio software.

© 2006 Avid Technology, Inc. All rights reserved. Product features, specifications, system requirements and availability are subject to change without notice. Avid, M-Audio, X-Session Pro, Fast Track and MobilePre are either trademarks or registered trademarks of Avid Technology, Inc. All other trademarks contained herein are the property of their respective owners.



WARNING: This product contains chemicals, including lead, known to the State of California to cause cancer, and birth defects or other reproductive harm. **Wash hands after handling.**

M-Audio USA

5795 Martin Rd., Irwindale, CA 91706

Technical Support

web: www.m-audio.com/tech
tel (pro products): (626) 633-9055
tel (consumer products): (626) 633-9066
fax (shipping): (626) 633-9032

Sales

e-mail: sales@m-audio.com
tel: 1-866-657-6434
fax: (626) 633-9070

Web www.m-audio.com

M-Audio Germany

Kuhallmand 34, D-74613 Ohringen, Germany

Technical Support

e-mail: support@m-audio.de
tel: +49 (0)7941 - 9870030
fax: +49 (0)7941 98 70070

Sales

e-mail: info@m-audio.de
tel: +49 (0)7941 98 7000
fax: +49 (0)7941 98 70070

Web www.m-audio.de

M-Audio U.K.

Floor 6, Gresham House, 53 Clarendon Road, Watford, WD17 1LA, United Kingdom

Technical Support

e-mail: support@maudio.co.uk
tel:(Mac support): +44 (0)1765 650072
tel: (PC support): +44 (0)1309 671301

Sales

tel: +44 (0)1923 204010
fax: +44 (0)1923 204039

Web www.maudio.co.uk

M-Audio Canada

1400 St-Jean Baptiste Ave. #150, Quebec City, Quebec G2E 5B7, Canada

Technical Support

e-mail: techcanada@m-audio.com
phone: (418) 872-0444
fax: (418) 872-0034

Sales

e-mail: infocanada@m-audio.com
phone: (866) 872-0444
fax: (418) 872-0034

Web www.m-audio.ca

M-Audio France

Floor 6, Gresham House, 53 Clarendon Road, Watford, WD17 1LA, United Kingdom

Renseignements Commerciaux

tel : 0 810 001 105
e-mail : info@m-audio.fr

Assistance Technique

PC : 0 820 000 731
MAC : 0 820 391 191

Assistance Technique

e-mail : support@m-audio.fr
mac@m-audio.fr

fax : +33 (0)1 72 72 90 52

Site Web www.m-audio.fr

M-Audio Japan

アビッドテクノロジー株式会社エムオーディオ事業部：〒460-0002 愛知県名古屋市中区丸の内2-18-10
Avid Technology K.K. : 2-18-10 Marunouchi, Naka-Ku, Nagoya, Japan 460-0002

カスタマーサポート (Technical Support)

e-mail : win-support@m-audio.jp
e-mail (Macintosh 環境専用) : mac-support@m-audio.jp
tel : 052-218-0859 (10:00~12:00/13:00~17:00)

セールスに関するお問い合わせ (Sales)

e-mail: info@m-audio.jp
tel: 052-218-3375
fax: 052-218-0875

Web www.m-audio.jp

061005XssnPro_UG_EN01